

Subsplash®

Colour in Motion

Starting installation Ricoh SG 3110DN and SG 7100DN
Corel Draw X5-X8

Although the screenshots in the following manual relate to the Ricoh SG 7100DN, the installation process for the Ricoh SG 3110 DN is virtually identical.

1. RPCS Driver installation

Option 1: Copy the RPCS Driver from the Print Equipment disk or from the Ricoh disk, unzip the files in a folder of your choosing and run the setup in the chosen folder.

Option 2: You can also directly download the driver from the official Ricoh website:

SG3110DN: http://support.ricoh.com/bb/html/dr_ut_e/re1/model/sg3110dn/sg3110dn.htm

SG7100DN: http://support.ricoh.com/bb/html/dr_ut_e/re2/model/sg7100dn/sg7100dn.htm

For a more detailed instruction regarding the installation of the RPCS driver please see the separate instruction on the disk.

PDF-file:

2. Settings in the printer driver

2.1 To change the setting of the driver you are required to go to the printing preferences.

You will find them under control panel/printer & faxes/printing preferences.

Alternatively, under windows/start > click left mouse button on the respective Ricoh printer > printing preferences.

To find out what operating system you are using click right mouse button on the windows symbol and then click left mouse button on system.

2.2 Change the following setting in the tab named "One Click Presets":

www.subsplash.de

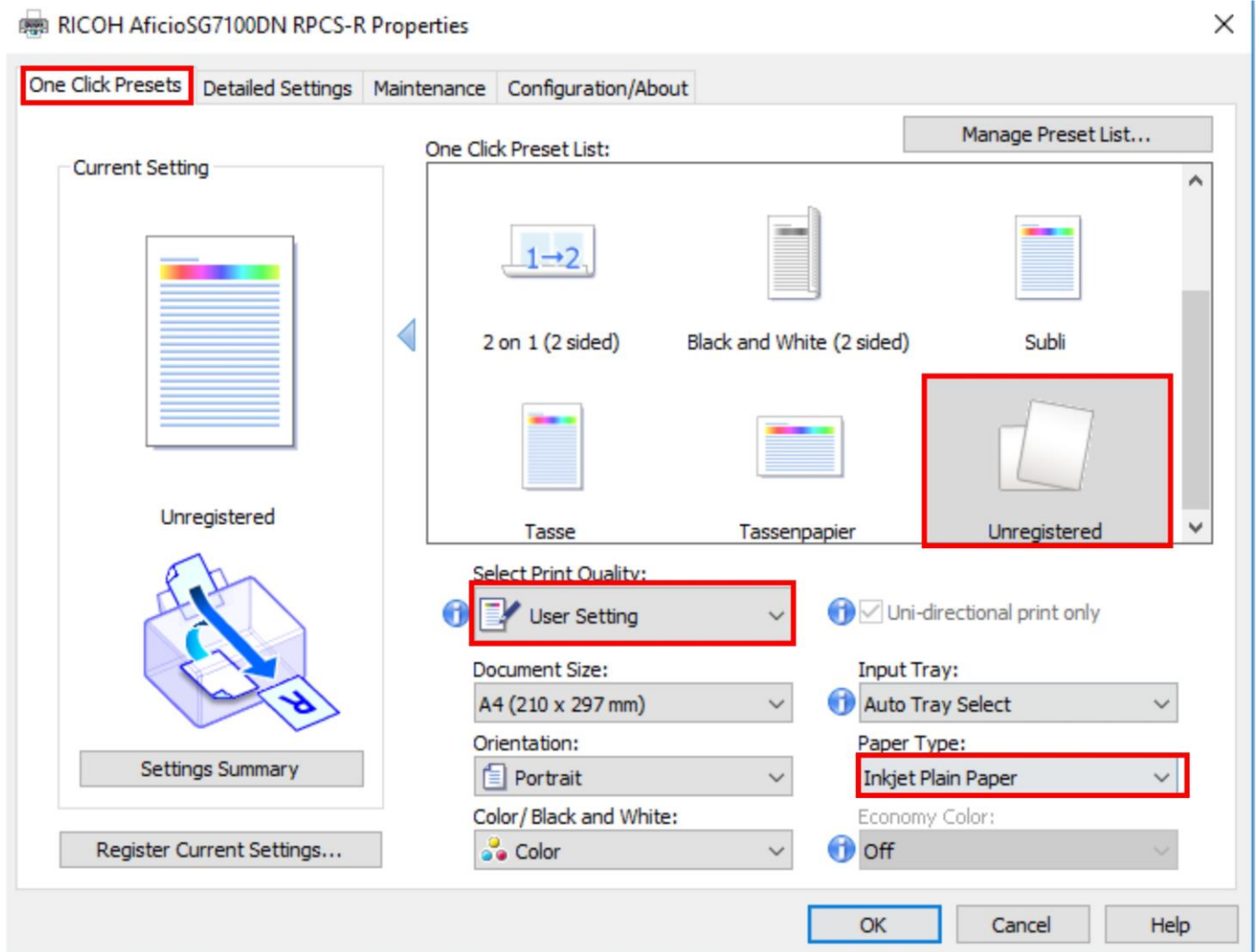
*Alle Warenzeichen, Produktnamen und Logos sind Eigentum der jeweiligen Besitzer.
Alle hier nicht ausdrücklich gewährten Rechte bleiben vorbehalten.

Sublisplash®

Colour in Motion

(The settings of the paper type depend on the kind of transfer paper that is being used. If you use the Ricoh-
TexPrint paper (TXPF-RI) choose the setting inkjet plain paper.)

Alternatively, If TexPrint paper (TXPF-I05) is being used, choose the setting high gloss paper. With high
gloss paper the colour profile is slightly altered, which in turn means that colour differences could occur.



Note: When a new preference has been set, it will be known as “Unregistered”. Only after saving these preferences you will be able to name them.

2.3 Go to the tab “Detailed Settings” and select the icon “Print Quality”.

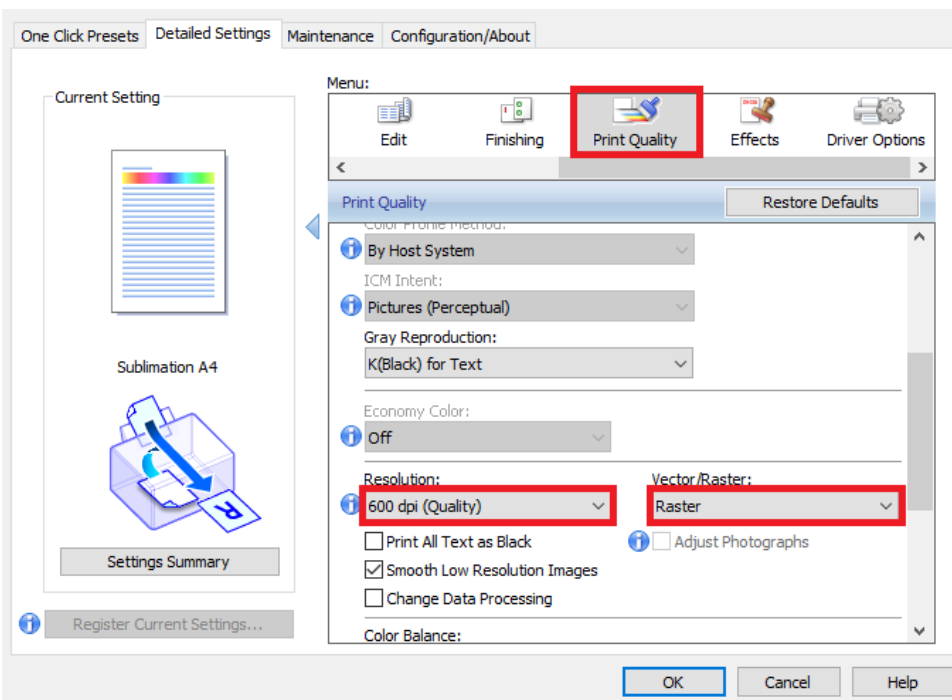
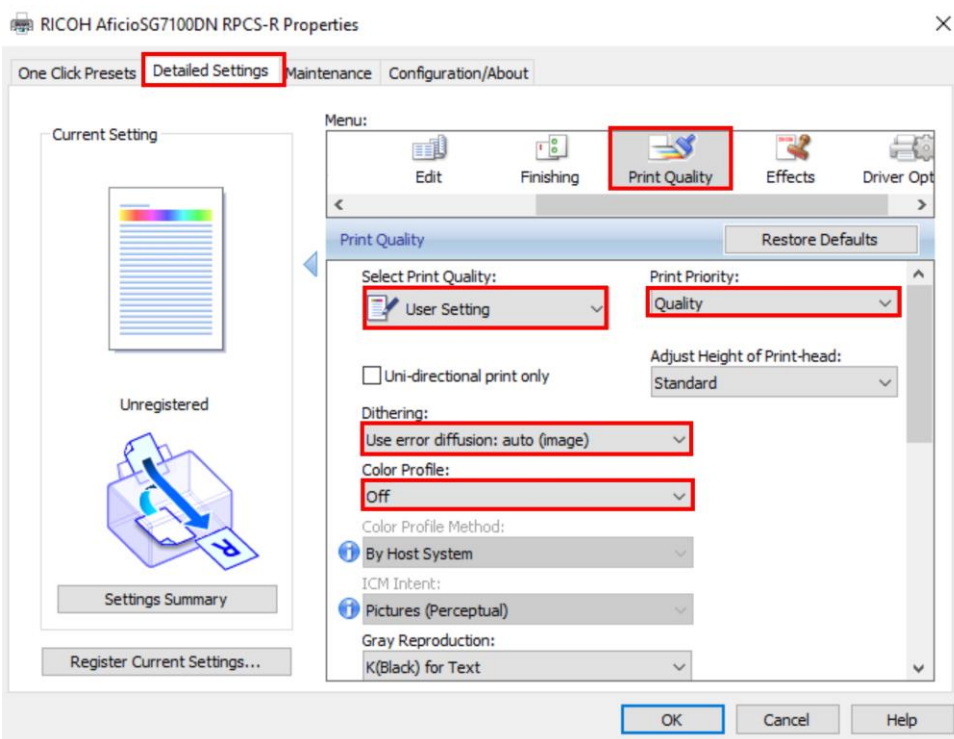
Change the following settings:

www.sublisplash.de

**Alle Warenzeichen, Produktnamen und Logos sind Eigentum der Jeweiligen Besitzer.
Alle hier nicht ausdrücklich gewährten Rechte bleiben vorbehalten.*

Sublisplash®

Colour in Motion



2.4 Save the changed preferences by clicking on “Register Current Settings”.

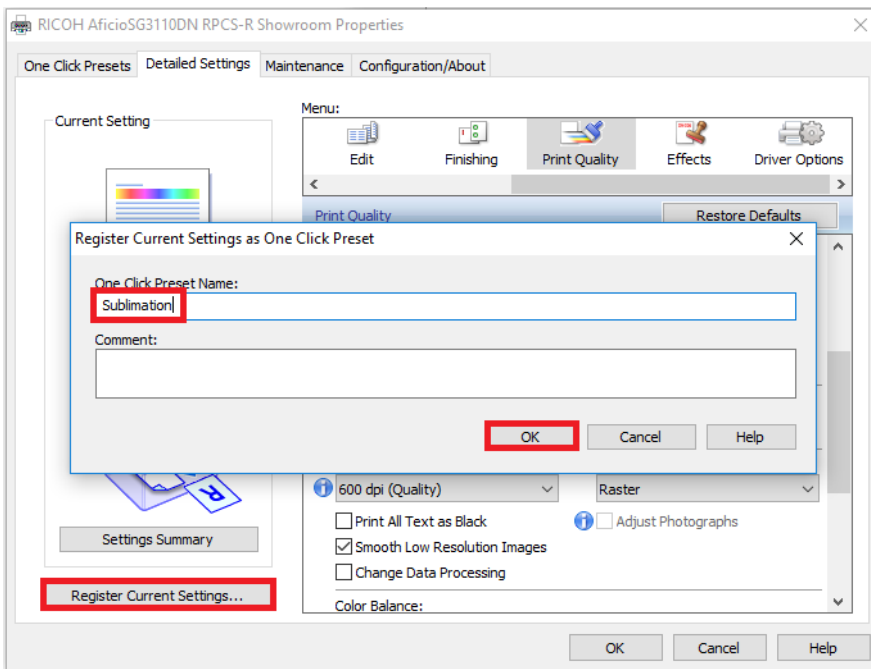
It is best to name them something obvious e.g. Subli or Sublimation.

www.sublisplash.de

**Alle Warenzeichen, Produktnamen und Logos sind Eigentum der jeweiligen Besitzer.
Alle hier nicht ausdrücklich gewährten Rechte bleiben vorbehalten.*

Sublisplash®

Colour in Motion



3. Installation of the ICC-profile

3.1 Open the folder of the ICC-profiles on the supplied disk.

3.2 Click the profile with the right mouse button and choose "install profile".

The profile is now automatically installed on your computer.

(Under the following path: C:/windows/system32/spool/drivers/color).

When installing the profile there will be no window asking for confirmation.

4. Colour settings in Corel X5- X8

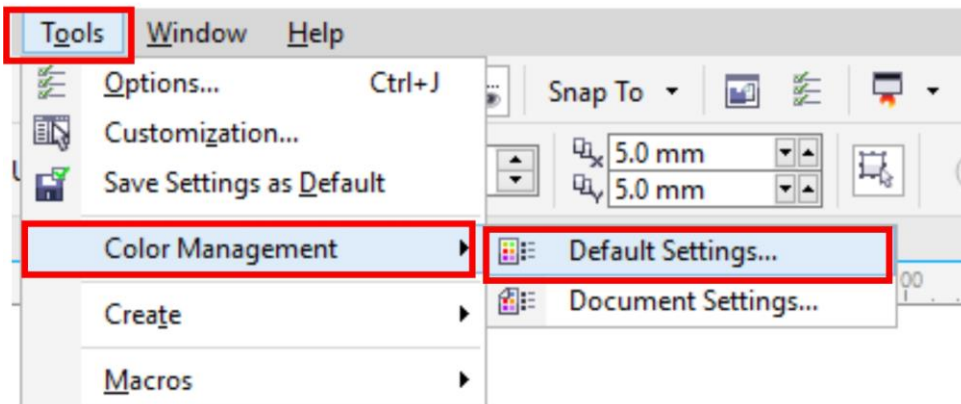
4.1 Open the default color management settings.

www.sublisplash.de

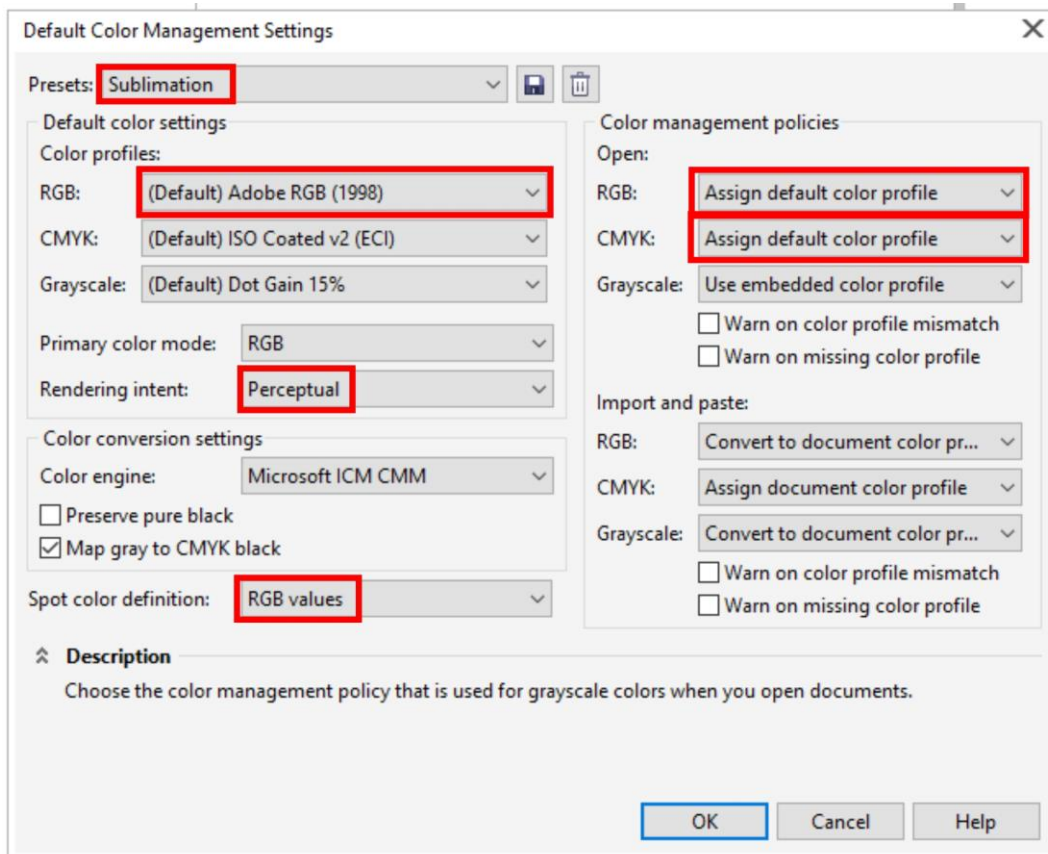
**Alle Warenzeichen, Produktnamen und Logos sind Eigentum der jeweiligen Besitzer.
Alle hier nicht ausdrücklich gewährten Rechte bleiben vorbehalten.*

Sublisplash®

Colour in Motion



4.2 Change the following settings:



4.3 Afterwards save the settings under an easily identifiable name e.g. Sublimation. This enables you to apply the settings through "Presets".

www.sublisplash.de

**Alle Warenzeichen, Produktnamen und Logos sind Eigentum der jeweiligen Besitzer.
Alle hier nicht ausdrücklich gewährten Rechte bleiben vorbehalten.*

Sublisplash®

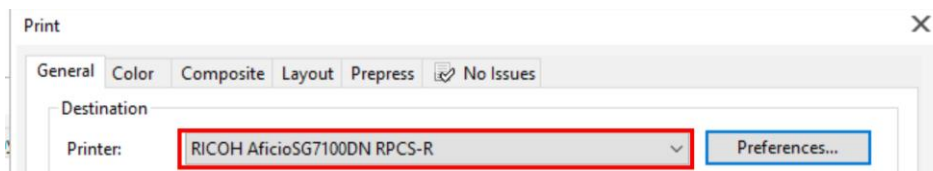
Colour in Motion

Default Color Management Settings

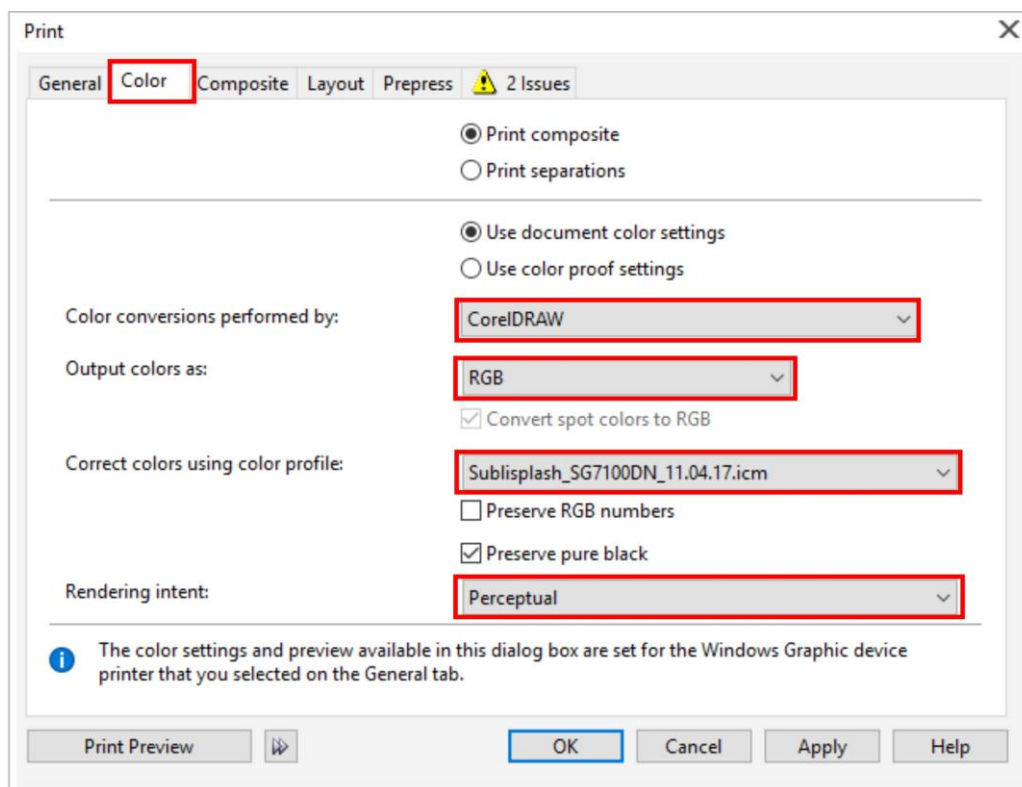


4.4 Open printing preferences through “File” > “Print”.

4.5 Choose the printer.



4.6 Change the following settings in the tab “Color”:



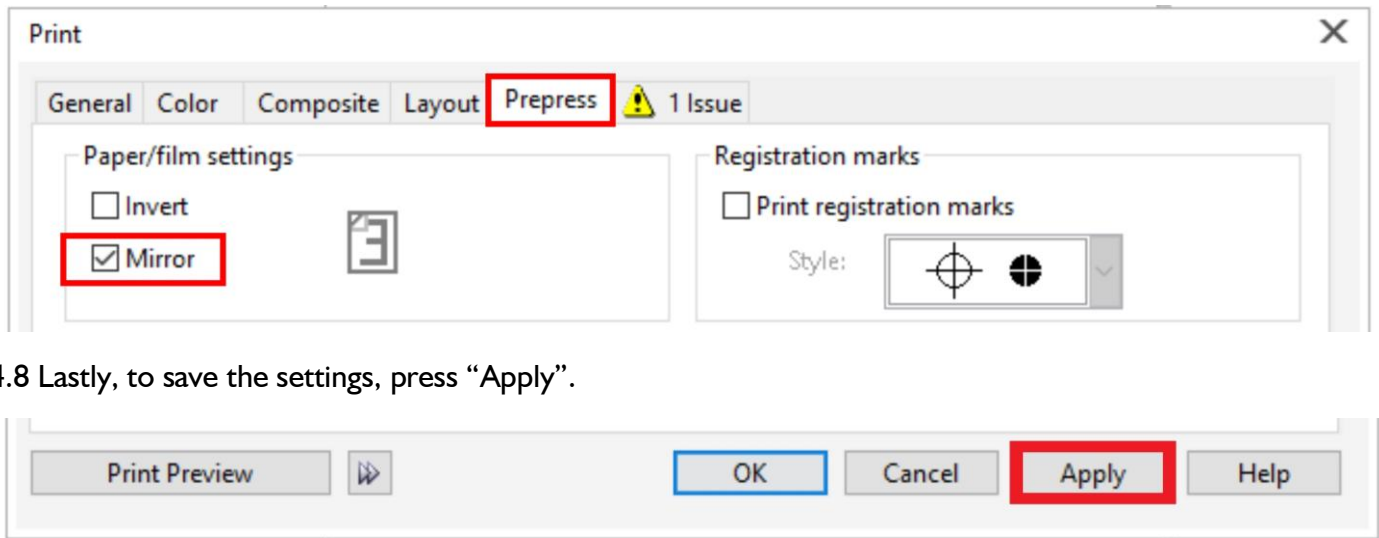
4.7 To mirror the picture when printing, check the box “Mirror” in the tab “Prepress”

www.sublisplash.de

**Alle Warenzeichen, Produktnamen und Logos sind Eigentum der jeweiligen Besitzer.
Alle hier nicht ausdrücklich gewährten Rechte bleiben vorbehalten.*

Sublisplash®

Colour in Motion



4.8 Lastly, to save the settings, press “Apply”.

www.sublisplash.de

**Alle Warenzeichen, Produktnamen und Logos sind Eigentum der jeweiligen Besitzer.
Alle hier nicht ausdrücklich gewährten Rechte bleiben vorbehalten.*